

8.1 Description of the County

8.1.1 Background

Madison County is located on the northern edge of the planning area. The county has six municipalities, with Danielsville serving as the county seat. The other cities are Carlton, Colbert, Comer, Hull and Ila.

8.1.2 Population

The most recent population figures from the 2000 U.S. Census show the County population to be 25,730. Table 8-1 shows the 2000 population, by census zone. The 2004 population is estimated at 28,454.

Table 8-1
Madison County and Census Zone Population

City	Population
Broad River CCD, Madison County, Georgia	1,936
Colbert CCD, Madison County, Georgia	10,790
Comer CCD, Madison County, Georgia	3,913
Danielsville CCD, Madison County, Georgia	3,856
Ila CCD, Madison County, Georgia	5,235
TOTAL	25,730

Source: 2000, U.S. Census

8.1.2.1 Seasonal Population Changes

The County does not experience any significant seasonal changes in population.

8.1.2.2 Number of Households

The total number of households in the County planning area in 2000 was 10,520. Table 8-2 shows the number of single and multi-family households in the planning area from the 2000 U.S. Census.

Table 8-2
Housing Units in Madison County

Type	Amount
Single Family Housing	6,247
Multi-Family Housing	4,273
Total	10,520

Source: 2000, U.S. Census

8.1.3 Economic Activity

As identified by the Georgia Department of Labor (2002) Table 8-3 indicates for the County the number of businesses and number of employees for each sector identified by NAISC code.

**Table 8-3
Madison County Employment by NAICS Category**

MADISON COUNTY		
Industry	Number of Firms	Number of Employees
Goods Producing	139	1,076
Agriculture, forestry, & fishing	9	24
Mining	0	0
Construction	111	578
Manufacturing	20	475
Food Manufacturing	*	*
Beverage & tobacco mfg	0	0
Textile mills	*	*
Textile product mills	0	0
Apparel Manufacturing	*	*
Leather & allied product mfg		
Wood product Manufacturing	*	*
Paper Manufacturing	0	0
Printing and related activities	0	0
Petroleum and coal products mfg	0	0
Chemical Manufacturing	0	0
Plastics & rubber products mfg	0	0
Nonmetallic mineral product mfg	5	42
Primary metal Manufacturing	0	0
Fabricated metal product mfg	*	*
Machinery Manufacturing	0	0
Computer & electronic product mfg	0	0
Electrical equipment/appliance	*	*
Transportation equipment	*	*
Furniture and related product mfg	4	30
Miscellaneous mfg industries	0	0
Service Producing	206	1,254
Wholesale trade	18	58
Retail trade	54	353
Transportation and warehousing	13	53
Utilities	*	*
Information	6	24
Finance and insurance	8	61

MADISON COUNTY		
Industry	Number of Firms	Number of Employees
Real estate and rental and leasing	7	12
Professional, scientific/tech svcs	21	66
Management: companies/enterprises	*	*
Administrative and waste svcs	14	50
Educational services	*	*
Health care and social services	14	201
Arts, entertainment and recreation	*	*
Accommodation and food services	14	163
Other services (except government)	30	138
Unclassified - industry not assigned	7	8
Total - Private Sector	352	2,339
Total - Government	30	1,156
Federal government	4	52
State government	10	79
Local government	16	1,025

Source: 2002, Georgia Department of Labor

8.2 Waste Disposal Stream Analysis

8.2.1 Inventory of Waste Disposed

The Georgia Division of Environmental Protection reports that 17,766 tons of waste was disposed in MSW landfills and 2,621 tons of waste was disposed in construction and demolition landfills from Madison County between the fourth quarter of 2002 through the third quarter of 2003. This results in a per capita disposal rate of 3.64 pounds per day, lower than the State average. It is assumed that this number is lower than the State average for three reasons:

- The effectiveness of waste reduction programs;
- Illegal disposal in more rural areas of the County;
- Export to disposal facilities in South Carolina; and
- Deliveries to the Athens-Clarke County landfill with some Madison County waste documented as Athens-Clarke County waste.

Table 8-4 shows the results of an analysis that breaks down the waste disposed from Madison County in MSW and C and D landfills by sector. A telephone survey of landfills in the State of Georgia, conducted by R.W. Beck, Inc., suggests that of the waste delivered to MSW landfills, 66.6 percent is MSW (generated by the commercial

or residential sector), 12.3 percent is construction and demolition debris, 14 percent is industrial, and 7.1 percent is sludge or biosolids. These percentages were applied to the amount of waste disposed of in MSW landfills from Madison County and its municipalities.

Table 8-4
Waste Disposed by Section (4Q 2002 through 3Q 2003)
Madison County

Sector	Tons to MSW Landfill	Tons to C&D Landfill	Total Tons
Residential	6,978.1		6,978.1
Commercial	4,854.3		4,854.3
Industrial	2,487.3		2,487.3
C&D	2,185.2	2,621	4,806.2
Sludge/Biosolids	1,261.4		1,261.4
TOTAL	17,766.3	2,621	20,387.3

To break down the MSW portion of the waste disposed in MSW landfills by residential and commercial generators, preliminary results from the first season of sampling for the Georgia Department of Community Affairs (DCA) waste composition study were used. Results from 120 samples taken from three landfills in the State indicated that approximately 32 percent of the waste stream comes from commercial generators and 46 percent comes from residential generators. The remaining 22 percent was in transfer trailers and thus the source was not identifiable. For purposes of this analysis, it is assumed that the waste in the transfer trailers has the same residential/commercial split as the rest of the MSW delivered to the MSW landfills.

8.2.1.1 Waste Characterization

Preliminary analysis of waste characterization from the DCA sampling study shows the percentage of each type of material in the commercial and residential waste disposed of in an MSW landfill, shown in Table 8-5. These results suggest that 63 percent of the residential and commercial waste disposed of in Georgia landfills is paper or organic material. Once the waste characterization study is complete, these percentages can be revised to be more specific to the northeast Georgia region.

Table 8-5
Projected Characterization of MSW Disposed from Madison County¹

Material	Average
Newspaper	4.9%
Corrugated Cardboard	9.6%
Office	2.5%
Magazine/Glossy	3.0%
Paperboard	3.9%
Mixed (Other Recyclable)	3.3%
Other (Non-recyclable)	10.0%
Total Paper	37.2%
#1 PET Bottles	1.7%
#2 HDPE Bottles	1.2%
#3-#7 Bottles	0.3%
Expanded Polystyrene	1.6%
Film Plastic	8.1%
Other Rigid Plastic	3.9%
Total Plastic	16.9%
Clear	2.0%
Green	0.5%
Amber	1.6%
Other	0.5%
Total Glass	4.6%
Steel Cans	1.9%
Aluminum Cans	1.0%
Other Ferrous	2.9%
Other Non-Ferrous	0.8%
Total Metal	6.6%
Yard Waste	1.5%
Wood (non-C&D)	2.1%
Food Waste	11.9%
Textiles	3.8%
Diapers	2.7%
Fines	3.3%
Other Organics	0.8%
Total Organics	26.0%

Material	Average
Drywall	0.2%
Wood	3.1%
Inerts	0.2%
Carpet	1.4%
Other C&D	1.0%
Total C&D	5.9%
Televisions	0.1%
Computers	0.1%
Other Electronics	1.3%
Tires	0.3%
HHW	0.2%
Other Inorganics	0.9%
Total Inorganics	2.8%
Total	100.0%

¹ Based on sampling data from Georgia Waste Characterization, Fall 2003

8.2.1.2 Unique Conditions and/or Seasonal Variations

Madison County knows of no unique conditions or seasonal variations that will dramatically change the amount of waste projected.

8.2.1.3 Waste Generating Disasters

Without knowing the type and degree of an unanticipated disaster, Madison County can not project the amount or type of waste that would need to be managed from such an event. However, any additional yard trimmings that would need to be managed would be delivered to the Oglethorpe County landfill. Any additional MSW would be delivered to Oak Grove landfill.

8.2.2 Projections of Waste to be Disposed

Table 8-6 shows waste projections based on the estimated per capita waste disposed in the most recent year for which data are available. Based on 17,766 tons disposed in MSW landfills and 2,621 tons disposed in C&D landfills, approximately .74 tons were disposed of per capita per year. If this per capita disposal rate were to remain the same, it is estimated that 27,965 tons per year would be disposed by the end of the planning period.

Table 8-6
Waste Disposal Projections at Current Per Capita Disposal Rate
Madison County

Estimated Per Capita Disposed	2004	2005	2006	2007	2008	2009	2010	2011	2012	2013
Population	29,364	30,304	31,273	32,274	33,306	34,410	35,511	36,647	37,820	29,364
Tons	20,387	21,040	21,713	22,407	23,124	23,864	24,628	25,444	26,258	27,098

8.2.2.1 Per Capita MSW Disposal Reduction Goal

It is difficult to determine the waste reduction achieved since 1991 based on the tonnage data available. In 1991, since Madison County had no historic scale data, the Northeast Georgia Regional Solid Waste Management Plan assumed that the per capita disposal rate in Madison County was equivalent to the regional average (without Athens-Clarke County) of .79 tons per capita per year. Based on the tonnage of waste reported by the County, Madison County’s per capita disposal rate declined approximately 16 percent between 1991 and 2002.

8.3 Waste Reduction Element

8.3.1 Inventory of Waste Reduction Programs

This section provides detailed information on Madison County’s existing waste reduction programs that target the residential, commercial/institutional, industrial, construction and demolition, and yard trimming sectors and waste streams.

8.3.1.1 Source Reduction Programs

Madison County operates a Keep Madison County Beautiful program that handles the education outreach for the County. The program promotes source reduction, reuse, and recycling initiatives by targeting schools, government, businesses and private citizens. These programs are described in more detail in Section 7.6.

8.3.1.2 Recycling

The Madison County transfer station has the only recycling center in the County. The center accepts glass, paper, aluminum, steel cans, tires, scrap metal, motor oil and batteries. The entire County population has access to the center. The County also operates annual programs to recycle Christmas trees and telephone books. Tables 8-7, 8-8, and 8-9 describe the recycling programs, markets, and facilities available to Madison County.

**Table 8-7
Recycling Programs in Athens-Clarke County (2003)**

Type of Program	Jurisdictions	Population Served	Operated by:	Materials Accepted	Tons Diverted (2003)
Drop-off Center	Madison County	22,214	Madison County	Glass	N/A
				Paper	217.36
				Steel Cans	N/A
				Tires	40.36
				Scrap Metal	239.21
				Aluminum	1.14
				Batteries	2.38
				Motor Oil	2.55
				Commingled	35.33

Source: Madison County Solid Waste Department

**Table 8-8
Businesses that Accept Recyclables from the Planning Area**

Name	Location	Accepts Material from:		Materials Accepted
		Geographic Area	Sector	
Athens Auto Wrecking Co.	Hull, GA	Madison County	Residential/Commercial	Metals, Ferrous Metals, Metal Appliances, Autos, Non Ferrous Metals, Aluminum Cans

Source: Georgia Recycling Markets Directory

**Table 8-9
Recycling Facilities**

Facility Type	Owner/ Operator	Jurisdictions Served	Sectors Served	Materials Accepted	Tons Processed (2003)	Average Tons Per Day Processed ¹	Maximum Processing Capacity (TPD)
Transfer Station	Madison County	Madison County	Residential/ Commercial	Glass	35.33	.15	N/A
				Paper	217.36	.87	N/A
				Steel Cans			N/A
				Tires	40.36	.17	N/A
				Scrap Metal	239.21	.96	N/A
				Aluminum	1.14	.004	N/A
				Batteries	2.38	.009	N/A
Motor Oil	2.55	.032	N/A				

8.3.2 Yard Trimmings Programs and Facilities

The Madison County transfer station does not accept yard trimmings. Residents throughout the County take their yard trimmings, leaves and limbs to the Oglethorpe County C&D landfill for disposal.

Keep Madison Beautiful sponsors an annual project to recycle Christmas trees. The local electric utility grinds the trees into mulch that is used to landscape government offices.

The Cities of Comer and Danielsville own grinders that are used to mulch limbs. City work crews then use the mulch for landscaping. Residents take their yard trimmings to the C&D landfill in Oglethorpe.

Table 8-10 describes the yard trimmings programs operating in the County.

Table 8-10
Yard Trimmings Programs (2003)

Program	Owner/Operator	Jurisdictions Served	Sector Served*	Materials Accepted	Final Disposition
Municipal Drop-off yard trimmings	Oglethorpe County	Madison County	Residential	Yard trimmings	Disposed in C&D landfill
Municipal Limb Grinding	Cities of Comer and Danielsville	Cities of Comer and Danielsville	Residential, Commercial	Limbs	Ground for mulch used for City landscaping

8.3.2.1 Items Requiring Special Handling

The Madison County recycling center at the County transfer station accepts and recycles tires for a fee, white goods, car batteries and scrap metal. All County residents have access to the facility. Keep Madison County Beautiful also holds an annual white goods/battery collection. Tire Amnesty Days have been held in the past and were sponsored through DRP’s Scrap Tire Grant. Table 8-11 highlights these programs.

Table 8-11
Programs for Materials Requiring Special Handling (2003)

Material	Targeted Sector(s) ¹	Management Strategy	Final Disposition of Material(s)
Scrap Metal	R	Drop-off at County Recycling Center	America Recycles/Allewines
Tires	R	Drop-off at County Recycling Center	GreenMan Tech
Car Batteries	R	Drop-off at County Recycling Center	Certified processor
White Goods	R	Drop-off at County Recycling Center	America Recycles/Allewines
¹ R= Residential, I=Industrial, C=Commercial, CD= C&D Source: Madison County Solid Waste Department			

8.3.3 Assessment of Waste Reduction Programs

Madison County operates one drop-off center for the collection of recyclables. All residents and businesses in the County must bring materials to this site. Residents must take any yard trimmings to Oglethorpe County where they are disposed in an inert landfill.

8.3.4 Needs and Goals

Based on the inventory and assessment, adequacy of current programs and other programmatic options, including costs, Madison County has developed the following waste reduction needs and goals:

- Ensure that the County continues to pursue the State’s 25% reduction in the amount of solid waste received at disposal facilities;
- Increase education and awareness of recycling programs and opportunities for paper and organic waste materials; and
- Sustain waste reduction programs for the next 10 years.

8.4 Collection Element

8.4.1 Inventory of Existing Collection Programs

Madison County offers drop-off garbage and recycling to County residents at one large convenience center. The County has a contract with Oak Grove landfill in Barrow County to haul and dispose of garbage.

The Cities of Colbert, Danielsville, and Comer pick up curbside and deliver waste to the Madison County transfer station.

In Hull and Ila, residents contract directly with private haulers.

A list of the haulers operating in the County and a description of the collection programs are described in Tables 8-12 and 8-13.

**Table 8-12
Haulers Operating in Planning Area**

Hauler Name	Hauler Address	Sector Served ¹	Jurisdiction(s) Served	Arrangement ²
George Anglin	(706) 788-2053	R	Madison County	Residents contract individually with hauler
GA Waste Service	5181 Bay Creek Ch Rd.-Loganville, GA-30249- (706) 369-7555	R	Madison County	Residents contract individually with hauler
Madison Sanitation	P.O. Box 175-Hull, GA-30646-(706) 546-8428	R	Madison County	Residents contract individually with hauler
Trashman Wayne Bradberry	(770) 725-4596	R	Madison County	Residents contract individually with hauler

MADISON COUNTY

Hauler Name	Hauler Address	Sector Served ¹	Jurisdiction(s) Served	Arrangement ²
Strickland's Weekly Pickup	(706) 246-0481	R	Madison County	Residents contract individually with hauler
Clifford Bridges or Robert Bridges	1046 Hwy 106 S.-Hull, GA-30646-(706) 789-3568	R	Madison County	Residents contract individually with hauler
Jones Sanitation	4765 Danielsville St.-Danielsville, GA-30633-(706) 789-2376	R	Madison County	Residents contract individually with hauler
Alphonzo Mathis	285 Mission Drive-Athens, GA-30601-(706) 543-2752	R	Madison County	Residents contract individually with hauler
NE GA Waste Services	Donovan Thompson-(706) 297-4051	R	Madison County	Residents contract individually with hauler
Jim DeRevere One Time/Special Pickup	(706) 788-3757	R	Madison County	Residents contract individually with hauler
P D Conwell	611 Transco Road-Comer, GA-30629-(706) 795-2967	R	Madison County	Residents contract individually with hauler
Louise Langston	1117 Cromers Bridge Rd.-Royston, GA-30662-(706) 245-5937	R	Madison County	Residents contract individually with hauler
Larry Pulliam Community Recycling	(706) 246-0093	R	Madison County	Residents contract individually with hauler
4 Sons Sanitation	47 Adams Duncan Rd.-Hull, GA-30646-(706) 353-6744	R	Madison County	Residents contract individually with hauler
City of Colbert			City of Colbert	Collect from all City residents
City of Danielsville			City of Danielsville	Collect from all City residents
City of Comer			City of Comer	Collect from all City residents

¹ R= Residential, I=Institutional, C= Commercial, CD= C&D

² i.e., contract with local government, franchise agreement with local government, independent contract with generators, etc.
Source: Madison County Solid Waste Department

**Table 8-13
Inventory of Collection Programs**

Type	Collector	Program Description	Jurisdictions Served	Sectors Served ¹	Contractual Arrangements
Curbside Collection	Colbert, Danielsville, Comer	Weekly collection of garbage	Colbert, Danielsville, Comer	R	Cities provide collection services for residents
Curbside Collection	Private Haulers	Weekly curbside collection of garbage and recyclables.	Hull and Ila	R	Haulers contract with municipality
Drop-Off Collection	Madison County	Drop-off convenience center	Madison County	R	County has an agreement with Oak Grove Landfill in Barrow County to haul and dispose

8.4.1.1 Contingency Strategy

In the event of a disaster or emergency, the contingency plan for the County and its municipalities would be simple dump collection. The County estimates that it would take approximately three days to implement a contingency plan.

8.4.2 Assessment of Collection Programs

Collection programs for solid waste are sufficient to meet existing community needs. The more populated areas have at the source collection and the transfer station and recycling center drop off sites are available for all citizens. As the population grows, the County will continue to review what is needed to serve community needs.

8.4.3 Inventory of Illegal Dumping/Littering

Madison County does not feel that illegal dumping is an issue or problem within the County or its municipalities.

8.4.4 Assessment of Programs to Address Illegal Disposal

Madison County does not require a program to address illegal dumping as it is not a problem. Code enforcement handles the few problems that occur and Keep Madison County Beautiful offers continuing public education to keep incidents low.

8.4.5 Needs and Goals

Madison County will continue to strive to meet the needs of the County and to stay current on equipment and services to meet future needs.

8.5 Disposal Element

8.5.1 Inventory of Solid Waste Disposal Facilities

Madison County operates a County transfer station and has a contract with a private hauler to dispose of waste collected at the transfer station at the Oak Grove landfill in Barrow County. Most of the solid waste from the County was delivered to Oak Grove, with a much smaller amount delivered to Chambers R&B landfill. Construction and demolition debris was delivered to Oglethorpe County and the US-78 landfill in Walton County. Waste from the County will continue going to the landfills listed in Table 8-14 throughout the planning period.

Table 8-14
Inventory of Disposal Facilities and Thermal Treatment Technologies to be Used During the Planning Period (2004 – 2013)

Facility Name	Jurisdiction(s) Using Facility	Physical Address	Owner/ Operator	Facility Type	Types of Waste Accepted	Year Expected to Reach Capacity
Oak Grove Landfill	Madison County	Off SR 324 3 mi SW of Winder	Republic Waste	MSWL	MSW	11/1/2008
Butts-Co Pine Ridge Recycling	Madison County	Baily Jester Road Griffin		MSWL	MSW	6/29/2049
WMI-Live Oak #2 (SL)	Madison County	Old McDonough Rd AT I-285 Atlanta, GA	Waste Management	MSWL	MSW	12/31/2004
Banks County R&B Chambers Landfill	Madison County	705 Frank Bennett Road Homer, GA	Waste Management	MSWL	MSW	5/21/2040
Forsyth County Eagle Point Landfill	Madison County	Hightower Road Cumming, GA		MSWL	MSW	11/1/2060

Section 8

Facility Name	Jurisdiction(s) Using Facility	Physical Address	Owner/ Operator	Facility Type	Types of Waste Accepted	Year Expected to Reach Capacity
Oglethorpe County C&D Landfill	Madison County	US 78 One MILEo Crawford	Oglethorpe County	C&D	C&D	2014
US 78 Construction and Demolition Landfill	Madison County		Walton County	C&D	C&D	6/3/2049

8.5.1.1 Assurance of 10-Year Capacity

Madison County has an agreement with Republic Waste for the hauling and disposal of solid waste. The County has obtained a letter of capacity assurance from Republic for both the Oak Grove and Pine Ridge landfills, ensuring capacity in excess of 10 years. Table 8-15 identifies the disposal capacity assurance strategy for Madison County for the ten year planning period.

**Table 8-15
Disposal Capacity Assurance Summary (2004-2013)**

Madison County	Year 1 (2004)	Year 2 (2005)	Year 3 (2006)	Year 4 (2007)	Year 5 (2008)	Year 6 (2009)	Year 7 (2010)	Year 8 (2011)	Year 9 (2012)	Year 10 (2013)
Amount of Waste	8,280	8,545	8,818	9,101	9,392	9,692	10,013	10,334	10,664	11,005
Amount to Oak Grove/Pine Ridge Landfill	5,515	5,692	5,874	6,062	6,256					
Landfill Selected by Contractor						6,456	6,670	6,883	7,103	7,330
Amount to US-78 or Oglethorpe C&D landfill	2,765	2,853	2,945	3,039	3,136	3,237	3,344	3,451	3,561	3,675

¹ This assumes all projected MSW will be delivered to Oak Grove until it closes and then to the landfill selected by the Contractor. In actuality, private haulers in the County are likely to deliver some waste to other landfills in the area.

8.5.1.2 Contingency Strategy

In the event of an emergency or natural disaster, the County and its municipalities would stage materials at the transfer station until the materials can be transferred to a disposal site. The County owns a large paved area on the transfer station site. In the event of a disaster or emergency, the County has made provisions to transport debris to the transfer station and to stage the debris at the paved site until the County can make arrangements to load the materials and transport them to the Oak Grove Landfill or Oglethorpe C&D Landfill for final disposal. The County estimates that it would take about three days to put a contingency plan in place.

8.5.2 Assessment of Disposal

Madison County's current disposal practices seem adequate to meet their needs even with projected waste disposal rates expected to increase by about 18 percent. The County's letter of capacity assurance from Republic Waste should ensure continued waste transport and disposal for the 10 year planning period.

8.5.3 Statement of Needs and Goals

Madison County's goal is to ensure that disposal facilities in the region meet regulatory requirements and can continue to support and facilitate effective solid waste handling programs for the next ten years.

8.6 Education and Public Involvement Element

8.6.1 Inventory of Education and Public Involvement

Madison County operates Keep Madison County Beautiful (KMCB) a fully funded program with paid staff. KMCB promotes and coordinates waste reduction activities throughout the county and cities. KMCB programs include Adopt-a-Highway, Adopt-a-Road, Christmas tree recycling, telephone book recycling, speakers and school programs. Table 8-16 describes the public education and involvement activities of the County.

**Table 8-16
Existing Environmental Education Initiatives**

Program/Activity	Jurisdictions Covered	Operated by	Target Audience	Description of Impact
Adopt-a-Highway	Madison County	KMCB	Businesses and Civic Groups	Keeps highways clean
Adopt-a-Road	Madison County	KMCB	Businesses and Civic Groups	Keeps roadways clean
Christmas Tree Recycling	Madison County	KMCB	Residents	Reduces waste at inert landfill and provides free mulch
Telephone Book Recycling	Madison County	KMCB	Businesses and Residents	Promotes recycling
Speakers Program	Madison County	KMCB	Businesses and Civic Groups	Educates citizens on environmental issues
School Program	Madison County	KMCB	Students	Promotes recycling among students

8.6.2 Assessment of Public Education and Involvement

KMCB provides the County with the resources need to promote sound solid waste management. Thus, the County has the resources needed to develop and implement educational programs related to solid waste management as the need arises.

8.6.3 Statement of Needs and Goals

Madison County’ goal with regard to public education and involvement is to ensure that residents and businesses understand the issues, needs, and goals of the solid waste management system.

8.7 Land Limitation Element

8.7.1 Inventory of Land Areas

In 1997, the Northeast Georgia Solid Waste Management Authority conducted a regional landfill site suitability study. As part of this study, the ten counties developed siting criteria and screened all land within the ten-county area to determine the suitability of all sites for landfill development.

Figure 8-1 shows a map of the ten-county region with areas shaded that are considered unsuitable and of limited suitability for a solid waste disposal facility. These determinations were made based on water protection and land use criteria and host community concerns established by the Northeast Georgia Regional Solid Waste Management Authority. Table 8-17 identifies the criteria and whether the presence of

these factors excluded a site altogether or lowered the ranking of the site for landfill suitability.

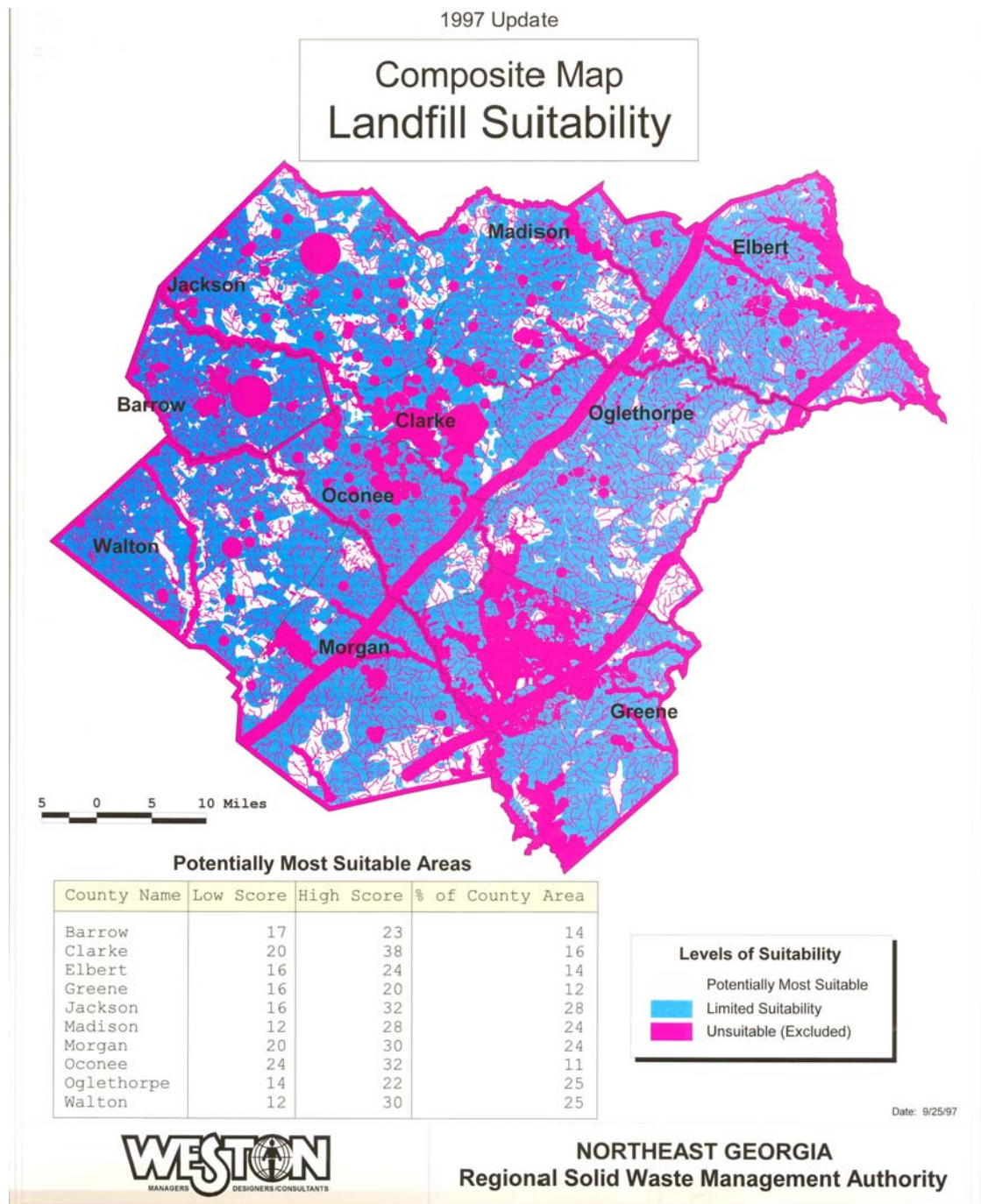


Figure 8-1

**Table 8-17
Regional Landfill Suitability Criteria**

	Criteria	Type
Water Protection (Geotechnical)	Major Fault Zone	Exclusionary
	Public Drinking Water Sources	Exclusionary
	Hydrologically Sensitive Area	Ranked
	Private Drinking Water Wells	Ranked
	Lakes, Rivers, and Creeks	Exclusionary
	Floodplains	Exclusionary
	Wetlands	Exclusionary and Ranked
	Steep Areas	Exclusionary
Land Use	Airports	Exclusionary
	Nonparticipating County Borders	Exclusionary
	Public Lands and Parks	Exclusionary
	Population Density	Exclusionary and Ranked
	Historic and Key Archaeological Sites	Ranked
	Biological/Rare Element Sites	Ranked
Host Community Concerns	Existing Pollution Sources	Ranked

Madison County does not have a zoning ordinance that would limit where solid waste handling facilities could be sited in the County.

8.7.2 Procedures for Siting Solid Waste Facilities

Any entity requesting a renewal or issuance of a solid waste handling permit from EPD must demonstrate that the facility or facility expansion is consistent with the local government’s solid waste management plan. The County will use the following criteria to determine whether the issuance of the requested permit is consistent with the Solid Waste Management Plan.

- Determine whether the proposed facility or facility expansion is sited in an area deemed unsuitable according to one of the criteria list above (in groundwater recharge area; located within two miles of a municipal water supply; on soils poorly suited for development; on slopes of greater than 25 percent; presence of major highways, roads, and airports; on urban or built up lands; water bodies or wetlands; or on federal, state, or public lands).
- Determine whether the proposed facility or facility expansion is sited in a location that is consistent with local zoning ordinances.
- Determine whether the proposed facility or facility expansion negatively impacts other natural or cultural resources of the County.

- Determine whether the proposed facility or facility expansion negatively impacts the current solid waste management infrastructure of the County;
- Determine whether the proposed facility or facility expansion negatively impacts collection capability and disposal capacity identified in the Plan.
- Determine whether the proposed facility or facility expansion negatively impacts the County's ability to contribute to the State's 25 percent waste reduction goal.
- Determine whether the proposed facility or facility expansion negatively impacts the financial viability of the County's solid waste management system.

No proposed facility or facility expansion will be sited in the County without a letter from the County Commission stating that the facility is consistent with the Solid Waste Management Plan. The County Commission will hold at least one public hearing to gather input to make this determination.

8.7.3 Assessment of Land Limitation

Approximately 76 percent of the land area in Athens-Clarke County is considered unsuitable or of limited suitability for siting a landfill.

The procedure described above, once put into place, will help ensure that facilities sited in the County are consistent with this Plan.

8.7.4 Needs and Goals

Madison County's goals with regard to land limitation are to ensure that proposed solid waste handling facilities are compatible with surrounding areas, are placed in areas suitable for such developments, and are consistent with the Solid Waste Management Plan.

8.8 Implementation Strategies

8.8.1 Summary of County Need and Goals

Madison County has established the following needs and goals as part of its Solid Waste Management Plan:

- To ensure efficient and effective collection of solid waste in the County over the next ten years.
- To contribute to the statewide goal of 25 percent per capita reduction in the amount of solid waste disposed.
- To ensure that disposal facilities in the region meet regulatory requirements and can continue to support and facilitate effective solid waste handling programs for the next ten years.
- To ensure that residents and businesses in the region understand the issues, needs, and goals of the solid waste

- To ensure that proposed solid waste handling facilities are compatible with surrounding areas, are placed in areas suitable for such developments, and are consistent with the County's Solid Waste Management Plan.
- To achieve a balanced and affordable solid waste management plan implementation strategy, while also meeting the goals and requirements of state law.

8.8.2 Statement/Demonstration of 10-Year Collection Capability

Madison County will continue existing collection programs for solid waste to meet ten year collection capabilities. The more populated areas have at the source collection and the convenience centers are available for all citizens. As the population grows, the County will continue to review what is needed to serve community needs.

8.8.3 Statement/Demonstration of 10-Year Disposal Capacity

Madison County has an agreement with Republic Waste for the hauling and disposal of solid waste. Republic Waste has proved the County with a letter assuring capacity in excess of 10 years for both the Oak Grove and Pine Ridge landfills.

8.8.4 Short Term Work Program (5-Year List of Programs/Work Activities)

Table 8-18 indicates the five year implementation strategy to meet the County's needs and goals, by element.

Section 8

**Table 8-18
Northeast Georgia
Solid Waste Management Plan Short-Term Work Program
2004 – 2008
Madison County**

Action	04	05	06	07	08	Responsible Party	\$\$	Possible Funding
AMOUNT OF WASTE ELEMENT								
<i>Goal: To determine the amount and composition of solid waste generated in the region in order to establish a sound information base upon which to make management decisions and determine if state and local goals are met.</i>								
1. The County will use EPD's disposal capacity reports and DCA's waste characterization data to quantify the amount and type of waste disposed in the County.	x	x				County	N/A	N/A
COLLECTION ELEMENT								
<i>Goal: To ensure efficient and effective collection of solid waste in the region over the next ten years.</i>								
1. Madison County will continue to operate solid waste drop-off at the transfer station.	x	x	x	x	x	Madison County	N/A (part of landfill operation costs)	Solid Waste Fund
2. City of Colbert will continue curbside solid waste collection for residential waste.	x	x	x	x	x	City of Colbert	N/A	User Fees
3. City of Comer will continue to provide residential curbside solid waste collection.	x	x	x	x	x	City of Comer	N/A	N/A
4. City of Danielsville will continue curbside pickup of residential solid waste.	x	x	x	x	x	City of Danielsville	N/A	N/A

**Table 8-18
Northeast Georgia
Solid Waste Management Plan Short-Term Work Program
2004 – 2008
Madison County**

Action	04	05	06	07	08	Responsible Party	\$\$	Possible Funding
5. Cities of Hull and Ila will continue to have residents contract directly with private haulers for collection.	x	x	x	x	x	City of Hull City of Ila/Private Hauler	N/A	N/A
6. Businesses in the county will contract with private haulers or with respective municipalities for collection of solid waste.	x	x	x	x	x	Businesses/ Municipalities/ Private Firms	---	User Fees
WASTE REDUCTION ELEMENT								
<i>Goal: To ensure a 25 percent reduction in the amount of solid waste disposed of in the region Landfill and to sustain waste reduction programs for the next 10 years.</i>								
1. Madison County will provide a drop-off site for recyclables at the transfer station.	x	x	x	x	x	Madison County/ Municipalities	N/A	Solid Waste Fund
2. County and municipalities will encourage commercial recycling programs through education.	x	x	x	x	x	County/ Municipalities	\$5K/year	Solid Waste Fund
3. Various civic organizations and private businesses will continue to help KMCB sponsor recycling programs.	x	x	x	x	x	Civic Groups/Private Businesses	---	---
4. Keep Madison County Beautiful will continue to promote recycling and waste reduction activities in the county.	x	x	x	x	x	Keep Madison County Beautiful	---	---

Section 8

**Table 8-18
Northeast Georgia
Solid Waste Management Plan Short-Term Work Program
2004 – 2008
Madison County**

Action	04	05	06	07	08	Responsible Party	\$\$	Possible Funding
DISPOSAL ELEMENT								
<i>Goal: To ensure that disposal facilities in the region meet regulatory requirements and can continue to support and facilitate effective solid waste handling programs for the next ten years.</i>								
1. Madison County will continue to operate a transfer station and contract with a private hauler for waste disposal.	x	x	x	x	x	County	---	---
2. County will promote education and enforcement programs concerning illegal dumping.	x	x	x	x	x	County	\$10K/year	Solid Waste Fund/Donations
PUBLIC EDUCATION AND INVOLVEMENT ELEMENT								
<i>Goal: To ensure that residents and businesses in the region understand the issues, needs, and goals of the solid waste management system.</i>								
1. Madison County will continue to fund the KMCB Program for county-wide public education.	x	x	x	x	x	Keep Madison County Beautiful	\$24K +5%/year	Solid Waste Fund
2. Madison County will help develop and participate in a regional clearinghouse of solid waste management information.	x	x	x	x	x	County/RDC	Part of \$20K, per capita basis	Solid Waste Fund
3. All municipalities will work with the County for coordination of public education activities.	x	x	x	x	x	Cities/County	---	---

Table 8-18
Northeast Georgia
Solid Waste Management Plan Short-Term Work Program
2004 – 2008
Madison County

Action	04	05	06	07	08	Responsible Party	\$\$	Possible Funding
LAND LIMITATION ELEMENT <i>Goal: To ensure that proposed solid waste handling facilities are compatible with surrounding areas, are placed in areas suitable for such developments, and are consistent with the Solid Waste Management Plan</i>								
1. County will ensure sufficient land use controls are in place.	x	x	x	x	x	County	--	---
2. County will review all permit requests for new solid waste handling facilities or expansions to determine consistency with SWMP.	x	x	x	x	x	County, NEGRSWMA	--	---



WESLEY J. NASH, CHAIRMAN

WILLIAM "BILL" TAYLOR
DISTRICT 1
JOHNNY FITZPATRICK
DISTRICT 2
MIKE YOUNGBLOOD
DISTRICT 3
MELVIN DRAKE
DISTRICT 4
BRUCE SCOGIN
DISTRICT 5
C. MORRIS FORTSON
COUNTY CLERK / FINANCE OFFICER

February 11, 2004

Mr. Joseph Tichy
Special Projects Coordinator
Northeast Georgia Regional Development Center
305 Research Drive
Athens, GA 30605-2795

Subject: Northeast Georgia Regional Solid Waste Management Plan Update

Dear Joe:

This letter serves as confirmation of Madison County's commitment to participate in the Northeast Georgia Regional Solid Waste Management Plan Update.

The county understands that the update will be a multi-jurisdictional plan covering the ten counties that comprise the Northeast Regional Solid Waste Management Planning Authority and address the following five core planning elements:

- Waste Reduction;
- Collection;
- Disposal;
- Land Limitation; and
- Education and Public Involvement.

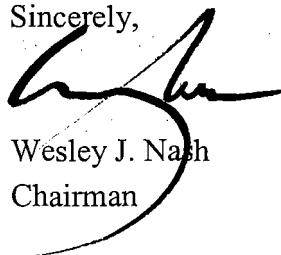
The plan will also include a waste stream analysis and implementation schedule.

The County understands that all jurisdictions that agree to plan together will maintain the planning relationships established in the approved and adopted plan throughout the planning period, including the five-year Short-Term Work Program update.

The County further understands that all participating local governments must adopt the Solid Waste Plan, the Short -Term Work Program, Plan Amendments, and/or Plan Updates before the DCA will make an eligibility determination for any of the local governments participating in the plan. If the County decides to break from the planning arrangement, we understand that we will be responsible for preparing our own individual solid waste management plan.

The County agrees to participate in two public hearings held on behalf of all participating jurisdictions at a central location in the area served by the plan, following all County specific public hearing notice procedures for due notification of the hearings.

Sincerely,



Wesley J. Nash
Chairman





967 Carl Bethlehem Road Winder, GA 30680 (770) 867-2499 FAX (770) 307-0934

Post-It® Fax Note	7671	Date	9/16/04	# of Pages	1
To	Lee Carnon	From	Sandra Webb		
Co./Dept.		Co.			
Phone #		Phone #	795-5151		
Fax #		Fax #			

September 13, 2004

Ms. Sandra Webb
Environmental Specialist
P.O. Box 293
Danielsville, GA 30633

Dear Ms. Webb:

The Oak Grove Landfill, Permit No. 007-020D(SL) and Pine Ridge Landfill, Permit No. 018-008D(MSWL) are owned and operated by Republic Services of Georgia, Limited Partnership have in excess of 10 years of disposal capacity.

The landfills are open to the public and accept waste that is acceptable under state and federal regulations from customers in good standing. Madison County and the municipalities of Danielsville, Carlton, Colbert, Hull and Ila as customers in good standing of the landfills will be allowed to dispose of the approximate 18,000 tons of waste generated annually for the next ten years at Pine Ridge and Oak Grove as long as they maintain their current status.

If you need any additional information, please give me a call at (770) 867-2499.

Sincerely,

A handwritten signature in black ink, appearing to read "Mark R. Allen".

Mark R. Allen
Area Landfill & Transfer Station Manager

ORDINANCES AND
AGREEMENTS

MADISON COUNTY
OUT-OF-COUNTY SOLID WASTE ORDINANCE

AN ORDINANCE TO PROHIBIT THE DISPOSAL OF OUT-OF-COUNTY SOLID WASTES IN MADISON COUNTY; TO PROVIDE FOR PENALTIES FOR VIOLATION; AND FOR OTHER PURPOSES.

BE IT ORDAINED BY THE BOARD OF COMMISSIONERS OF ROADS AND REVENUES OF MADISON COUNTY, GEORGIA, AND IT IS HEREBY ORDAINED BY THE AUTHORITY OF SAME AS FOLLOWS:

SECTION I. SHORT TITLE

This ordinance shall be known as the "OUT-OF-COUNTY SOLID WASTE ORDINANCE".

SECTION II. DEFINITIONS

As used in this ordinance, "Solid Waste" shall mean putrescible and nonputrescible wastes, except water-carried body waste and materials destined for recycling, and shall include garbage, rubbish (paper, cartons, boxes, wood, tree branches, yard trimmings, furniture and appliances, metal, tin cans, glass, crockery, or dunnage), ashes, street refuse, dead animals, sewage sludges, animal manures, industrial wastes (waste materials generated in industrial operations), residue from incineration, food processing wastes, demolition wastes, abandoned automobiles, dredging wastes, construction wastes, and any other waste material in a solid or semi-solid state not otherwise defined in these regulations.

SECTION III. PROHIBITION OF DISPOSAL OF OUT-OF-COUNTY WASTES

Disposal of solid wastes generated in a county other than Madison County shall be prohibited in Madison County.

SECTION IV. PENALTIES.

a. In the event that any person violates any provision of this Resolution, the County may, in addition to other remedies, institute injunction, mandamus, or other appropriate action or proceeding to prevent such unlawful act or to correct or abate such violation.

b. Any person who shall do anything prohibited by this Resolution or who shall fail to do anything required by this Resolution shall be guilty of a misdemeanor, amenable to the process of the Magistrate Court of Madison County, and upon conviction, shall be assessed with a fine of not more than \$1000 or imprisonment for not more than 12 months, or both, and in addition may be liable to pay all costs and expensed involved in such case. Each day any violation continues shall be considered a separate offense.

c. In addition thereto and totally and separately distinct therefrom, any violation of any provisions of this ordinance or failure to comply with any of its requirements shall be grounds for immediate suspension or revocation of any and all permits.

SECTION V. SEVERABILITY.

If any section, subsection, sentence, clause, phrase, or any portion of this Resolution be declared invalid or unconstitutional by any Court of competent jurisdiction, or if the provisions of any part of this Resolution as applied to any particular situation or set or circumstances shall be declared invalid or unconstitutional, such invalidity shall not be construed to affect the portions of this Resolution not so held

to be invalid, or the application of this Resolution to other circumstances not so held to be invalid. It is hereby declared to be the intent of the Board of Commissioners to provide for separable and divisible parts, and it does hereby adopt any and all parts hererof as may not be held invalid for any reason.

SECTION VI. AUTOMATIC REPEAL.

All Resolutions, or Ordinances, or parts therof, in conflict with the terms of thin Resolution are hereby repealed; but it is hereby provided that any Resolution, Ordinance, or law, which may be applicable hereto and aid in carrying out and making effective the intent, purpose and provisions hereof, which shall be liberally construed to be in favor of Madison County, is hereby adopted as a part hereof.

THIS RESOLUTION IS HEREBY ADOPTED this 27th day of June, 1989 to become effective immediately.

MADISON COUNTY BOARD OF COMMISSIONERS

William C. Madden

Chairman

Ned Berryman
Vice Chairman
Commissioner District #2

John B. Bell
Commissioner District #1

SOLID WASTE, SCRAP TIRE AND TRASH ORDINANCE OF MADISON COUNTY

TITLE

An ordinance defining litter, waste, scrap tires and public or private property; regulating the disposal of litter and waste, the transportation of litter and waste, the use of garbage or litter containers or receptacles, providing for the orderly disposal of solid waste; prescribing penalties for the violation of the ordinance and for other purposes related thereto.

Enactment Clause

For the purpose of promoting the health, safety and general welfare of the present and future inhabitants of Madison County and to provide an orderly and safe disposal of waste, the Board of Commissioners of Madison County, Georgia does hereby ordain and enact into law the following:

Section 1 – Definitions:

The term “litter” shall mean all discarded sand, gravel, slag, brickbats, rubbish, waste material, tin cans, refuse, garbage, trash, debris, dead animals or other discarded materials of every kind and description which are not waste as such term is defined herein.

“Public or private property” means the right of way of any road or highway; any body of water or watercourse; any park, playground, building, refuge, or conservation or recreation area; and residential or farm properties, timberlands, or forests.

“Waste” means all discarded substances and materials whatsoever exceeding 10 pounds in weight or 15 cubic feet in volume, or any such substance in any weight or volume if biomedical waste, hazardous waste (as that term is defined in O.C. G. A. Section 12-8-62), a hazardous substance (as that term is defined by O.C.G.A. Section 12-8-92), or any such substance or material dumped for commercial purposes. “Waste” includes without limitation, bottles; boxes; containers; papers; tobacco products; tires; appliances; mechanical equipment or parts; building or construction materials; tools; machinery; wood; motor vehicles; and motor vehicle parts; vessels; aircraft equipment; waste oil; batteries; antifreeze; slug from a waste-water treatment facility, water supply treatment plant, or air pollution control facility; air contaminants from any source or facility; and any other discarded material or substance of every kind and description resulting from domestic, industrial, commercial, mining, or governmental operations, including household, commercial, construction and demolition waste, or industrial solid waste which is non-hazardous, non-medical, and in a form classified as solid waste by the Georgia Department of Natural Resources.

“Scrap tires” means all tires which are no longer suitable for their original intended purpose because of wear, damage or defect. See O.C.G.A. §12-8-22 (31).

Section 2 – Waste Disposal – General:

- (A) The owner or occupant of any premises shall be responsible for the sanitary handling and disposition of garbage, litter, waste, scrap tires and refuse on the premises used or occupied by such person.
- (B) It shall be unlawful to dump, deposit, throw or leave or to cause or permit the dumping, depositing, placing, throwing or leaving of litter, waste or scrap tires at any place in this county, including, without limitation, any public or private property in this county or any waters in this county unless such litter or waste originates in this county and;
 - 1. The property is designated and permitted by the State of Georgia and/or by the Madison County Board of Commissioners or its duly designated agent for disposal of litter and waste, and the person is authorized to use such property; and
 - 2. The litter or waste is placed into a receptacle or container installed on such property; however, any litter or waste placed into such a receptacle or container installed on such property must not be allowed to accumulate for an unreasonable period of time, and in no event shall it be allowed to accumulate to the point of overflowing the container or receptacle or to a point where the container or receptacle may not be closed.
- (C) It shall be unlawful for any person to dump or place waste unless authorized to do so by law or by a duly issued permit:
 - 1. In or on any public highways, road, street, alley, or thoroughfare, including any portion of the right of way thereof, or on any other public lands except in containers of areas lawfully provided for such dumpings;
 - 2. In or on any fresh water lake, river, canal, or stream or creek; or
 - 3. In or on any public or private property unless such dumping will not adversely affect the public health and is not in violation of any other local, state or federal law, rule, or regulation.

Section 3 – Transporting Litter and Waste:

- (A) It shall be unlawful to drive or operate a vehicle in Madison County hauling wet or moist litter or waste which leaks, flows freely or spills from such vehicle.
- (B) Any litter or waste hauled on a moving vehicle in Madison County shall be covered or secured in such a manner that the litter or waste will not blow or escape from said vehicle while moving or parked on public streets or roadways in Madison County.
- (C) It shall be unlawful for any vehicle to transport litter or waste on any public streets, or roadways, in Madison County without suitable coverings or other restraint devices securely fastening such litter or waste to the vehicle so as to prevent any materials from being deposited on the roads or adjoining areas of the county. However, this section shall not prohibit the necessary spreading of any substance in public road maintenance or public road construction operations.

Section 4 – Regulation of Garbage or Litter Containers or Receptacles:

- (A) All garbage or litter containers or receptacles shall be maintained in as sanitary a manner as is reasonably possible consistent with its use for garbage and litter disposal.
- (B) Persons using garbage or litter container or receptacles shall deposit all authorized garbage and refuse in the container or receptacle.
- (C) No person shall deposit any burning or smoldering material in any such container or receptacle;
- (D) No person shall set fire to the contents of any such container and receptacle;
- (E) No dead animals shall be deposited in any such container or receptacle;
- (F) No person shall deposit large noncompactible articles in such containers or receptacles such as stoves, refrigerators, bed springs, mattresses, tires, large tree limbs, air conditioning units, or similar items;
- (G) No one shall deposit any flammable or explosive materials in any such containers or receptacles;
- (H) No person shall place or scatter litter or waste in or around such containers or receptacles.

Section 5 – Accumulation:

- (A) No owner or occupant of any premises in the unincorporated areas of Madison County shall allow litter or waste to accumulate thereon. No owner or occupant of any such property shall bury or burn litter or waste without prior authorization and permission from the applicable regulatory agency including but not limited to, the Environmental Protection Agency, Environmental Protection Division and/or the Georgia Forestry Service. Nothing in this provision shall authorize or be construed to permit the burial or burning of any material which is otherwise prohibited by state or federal law.
- (B) No owner or occupant of any property shall allow the accumulation on his or her premises of garbage or waste where such material creates or causes a health hazard to neighbors or other citizens, or which is unsightly or emits foul or obnoxious odors.
- (C) It shall be unlawful for any person to set fire to the contents of, indiscriminantly scatter or disperse the contents of, or otherwise vandalize any containers used for the storage or dumping of litter or waste.
- (D) The conduct described in paragraphs (A) – (C) of this Section 5 shall constitute a separate violation of the ordinance for each day the garbage or waste material remains on such premises.

Section 6 – Violations/Penalties:

- (A) Any person, firm, or corporation violating any portion of this ordinance shall be guilty of a misdemeanor and, upon conviction thereof, shall be punished as follows:
1. By fine of not less than \$100.00 not more than \$1000.00 or up to 60 days imprisonment or both. Each day the violation continues shall be a separate offense. However, this section shall not preclude the county from choosing to seek civil redress in a court of competent jurisdiction in addition to the criminal prosecution, it being the intent of the county to have both the civil and criminal rights of prosecution in this area; and/or
- (B) In the sound discretion of a court in which conviction is obtained, the violator may be directed to pick up and remove from any public street or highway or public right of way for a distance not to exceed one mile any litter the person has deposited and any and all litter deposited thereon by anyone else prior to the date of execution of sentence; and/or
- (C) In the sound discretion of the court in which conviction is obtained, the person may be directed to pick up and remove from an public park, private right of way, or with the prior permission of the legal owner or tenant in lawful possession of such property, any private property upon which it can be established by competent evidence that the person has deposited litter thereon, and all litter deposited thereon by anyone prior to the date of execution of sentence; and/or
- (D) The court may publish the names of persons convicted of violating this ordinance.
- (E) In the case of an improper garbage or waste disposal site, the property owner, contractor, developer, builder or other person responsible for the property shall cause the property to be cleaned and to come into full compliance with this ordinance. Madison County shall not be responsible for any costs of cleanup or remediation.

Section 7 – Enforcement:

Enforcement of this ordinance shall be the responsibility of the Madison County Code Enforcement Officer or his/her designee or the Madison County Sheriff or his/her designee. Any person or persons authorized to enforce this ordinance shall be empowered to enter any property, upon reasonable cause, at reasonable times in order to inspect the property for violations of this ordinance, subject to the condition that to allow entry on private property for inspection, the alleged violation of this ordinance must be visible from a public road or right of way, or upon such officer having received a written complaint signed by three residents of separate households of Madison County, Georgia alleging a violation of this ordinance. The Magistrate Court of Madison County shall also be authorized to issue summons for hearings on alleged violations of this ordinance upon written accusation of any person sui juris alleging such violation.

Section 8 – Civil Remedies and Abatement of Nuisance:

In the event that any person, firm, or corporation violates any provision of this ordinance, the county attorney or other appropriate authority of the county may, in addition to other

remedies, institute an action for injunction, mandamus, or other appropriate action or proceeding to prevent such unlawful act or to correct or abate such violation.

Section 9 – Evidence of Violations:

- (A) Whenever litter is thrown, deposited, dropped, or dumped from any motor vehicle, boat, airplane, or other conveyance in violation of this ordinance, it shall be prima-facie evidence that the operator of the conveyance has violated this ordinance.
- (B) Whenever any litter which is dumped, deposited, thrown, or left on public or private property in violation of the ordinance is discovered to contain any article or articles, including but not limited to letters, bills, publications, or other writings which display the name of a person thereon in such a manner as to indicate that the article belongs or belonged to such person, it shall be a rebuttable presumption that such person has violated this ordinance.

Section 10 – Yard Trimmings:

Yard trimmings shall not be placed in or mixed with solid waste. Yard trimmings shall not be disposed at any solid waste disposal facility having liners and leachate collection systems or requiring vertical expansion within the county. Yard trimmings shall be sorted and stockpiled or chipped, composted, used as mulch, or otherwise beneficially reused or recycled to the maximum extent feasible. Any yard trimmings to be collected by any entity other than the property owner shall be sorted and stored in such a manner as to facilitate collection, composting, or other handling.

Section 11 – Recycling:

The Madison County Board of Commissioners hereby finds that it is in the best interest of the citizens of Madison County, in order to promote the health, safety, welfare and morals of the citizens of the county, to recycle as many waste materials as possible in order to reduce the accumulation of litter and garbage and solid waste material within the county and to reduce the overall solid waste materials which must be properly disposed of. Therefore, it is the policy of the Madison County Board of Commissioners to encourage recycling whenever practicable.

Section 12 – Severability:

Should any sentence, section, subsection or provision of this ordinance or application of a provision of this ordinance be declared invalid or unconstitutional by any court of competent jurisdiction, such declaration shall not affect the validity of the ordinance as a whole nor any part thereof that is not specifically declared to be invalid or unconstitutional.

Therefore, be it ordained, that all conflicting resolutions, ordinance, or part of ordinances, or resolutions in conflict with this ordinance are hereby repealed.

Be it further ordained, that this ordinance shall take effect July 1, 1998 and shall be enforced from and after such date, the public welfare demanding it. So adopted and approved by the Board of Commissioners of Madison County, Georgia, this _____ day of _____, 1999.